

# The Patstamps TECHNIQUE JUNKIE NEWSLETTER

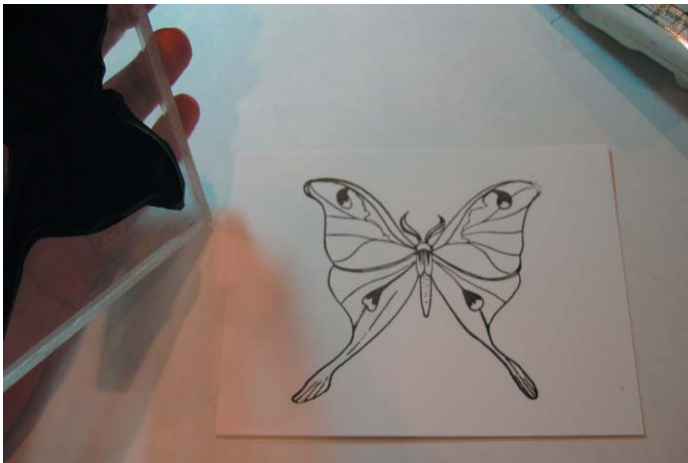
## Metallic Glow Tutorial August/September 2005

*I watched Technique Junkie Jackie Kennedy demonstrate this technique created by Junkie Mary Garvey at Lasting Impressions with Panache's booth at a recent rubber stamping show, and I knew I just had to share the technique here! After you wipe off the metallic pencil, you are left with an image that is still slightly colored that it just glows!*



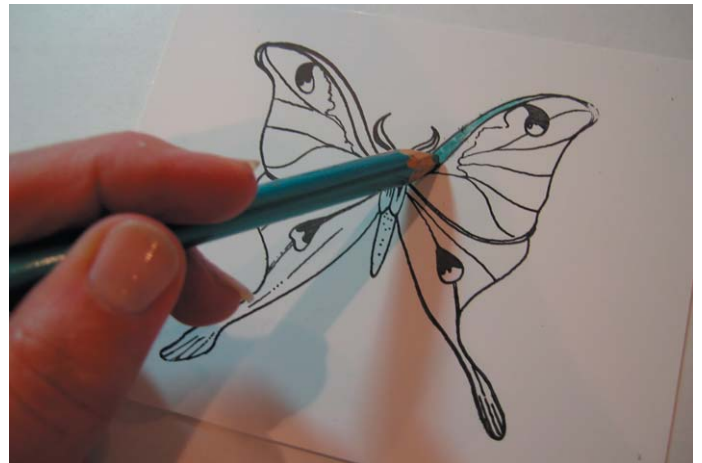
### Supplies:

- Metallic Art Pencils
- Paper Towel
- Stamp with open areas to color
- Dye inks in complementary colors
- Black Permanent Ink
- Stipple Brushes
- White Glossy Cardstock



### Step One:

Stamp image on cardstock using black ink. Allow to dry.



### Step Two:

Color image with metallic pencils.



### Steps Three:

When coloring, make certain to apply pencil thickly, leaving no white spots.



### Step Four:

Brush stipple brush over one of the ink colors to pick up ink.



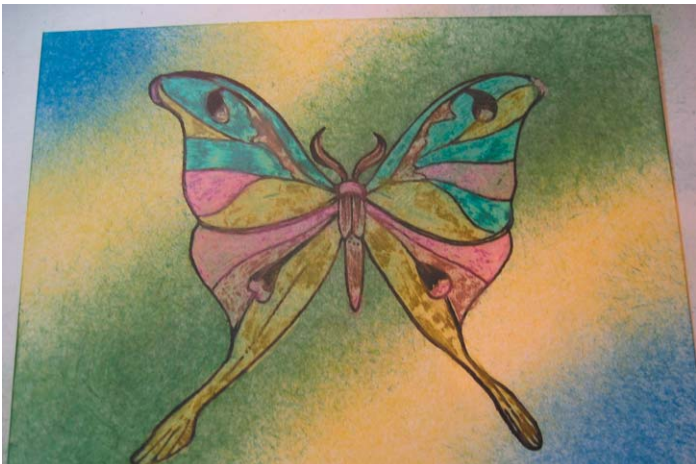
### Step Five:

Using a pouncing motion, stipple ink onto cardstock, over and around image.

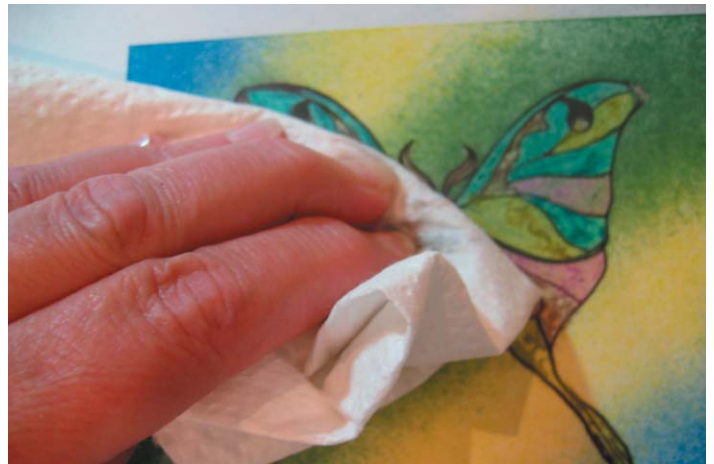


### Step Six:

Repeat with remaining colors of ink until the cardstock is colored.



### Step Six Continued:



### Step Seven:

Use a paper towel to buff the metallic pencil and the stippled ink, off the image.

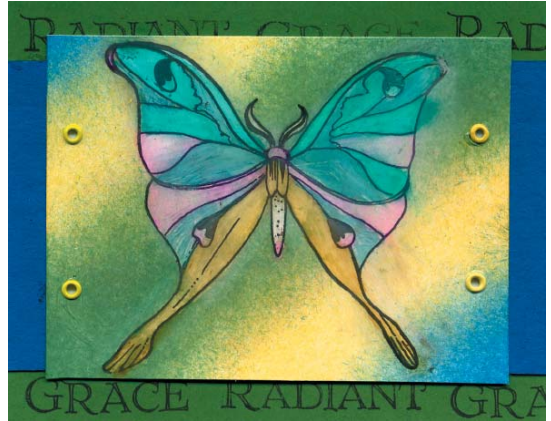




**Step Eight:**  
Mat and embellish as desired.

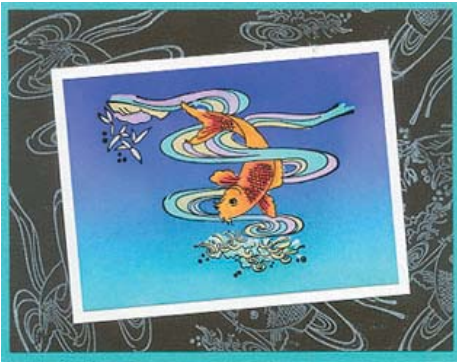
## Finished Card

Artwork by: Pat Huntoon  
Stamps: Stamps Zia, Stamp Camp



## Finished Card

Artwork by: Mary Garvey  
Stamps: Lasting Impressions with Panache



## Finished Card

Artwork by: Pat Huntoon  
Stamps: Stampin' Up!  
© 1990-2005 Stampin' Up! ®



## Finished Card

Artwork by: Lisa Somerville

Stamps: Stampin' Up!

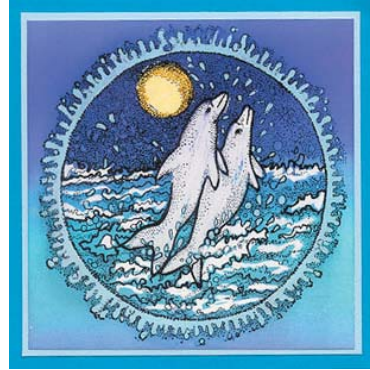
© 1990-2005 Stampin' Up! ®



## Finished Card

Artwork by: Mary Garvey

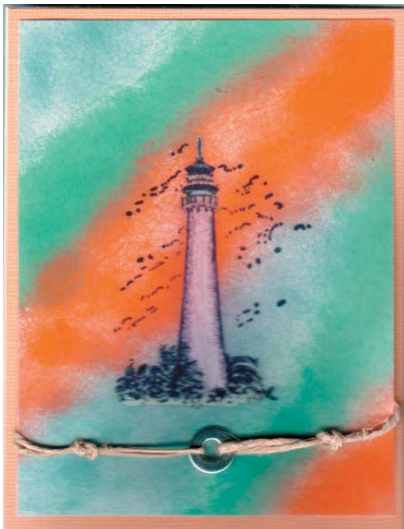
Stamps: Lasting Impressions with Panache



## Finished Card

Artwork by: Linda Hosey

Stamps: The Angel Company



## Finished Card

Artwork by: Jacki Kennedy

Stamps: Lasting Impressions with Panache





## Finished Card

Artwork by: Jacki Kennedy

Stamps: Lasting Impressions with Panache



## Finished Card

Artwork by: Mary Garvey

Stamps: Lasting Impressions with Panache

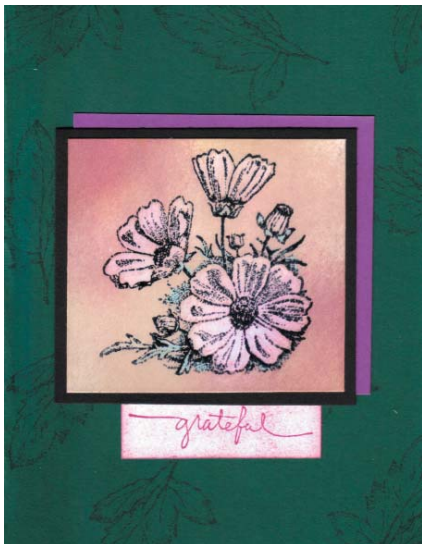


## Finished Card

Artwork by: Lisa Somerville

Stamps: Stampin' Up!

© 1990-2005 Stampin' Up! ®



## Finished Card

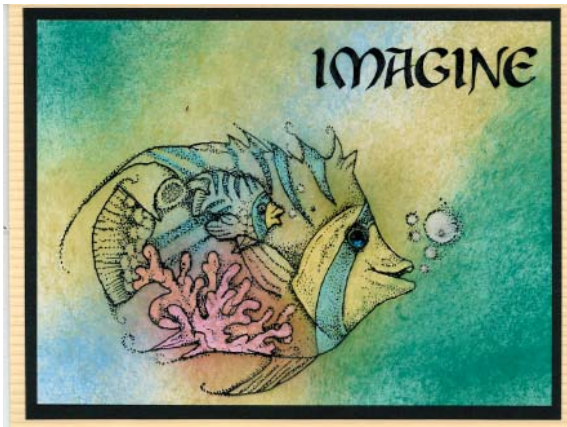
Artwork by: Mary Garvey

Stamps: Lasting Impressions with Panache



## Finished Card

Artwork by: Jacki Kennedy  
Stamps: Lasting Impressions with Panache



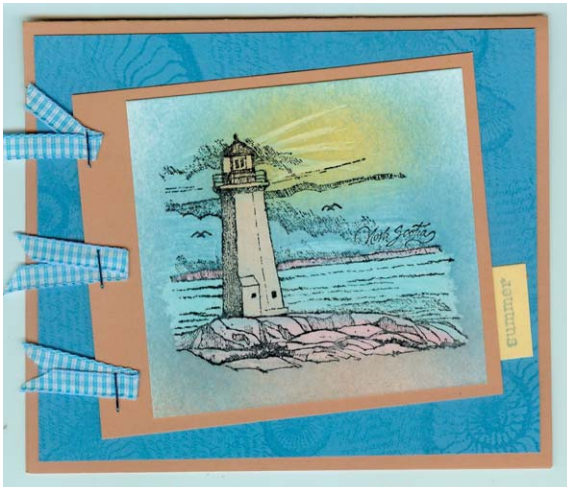
## Finished Card

Artwork by: Linda Hosey  
Stamps: The Angel Company



## Finished Card

Artwork by: Connie Babbert  
Stamps: Club Scrap, Stampin' Up!  
© 1990-2005 Stampin' Up! ®



## Finished Card

Artwork by: Connie Babbert  
Stamps: Stampabilities

