



PATSTAMPS

TECHNIQUE JUNKIE NEWSLETTER

## Gated Tags Tutorial

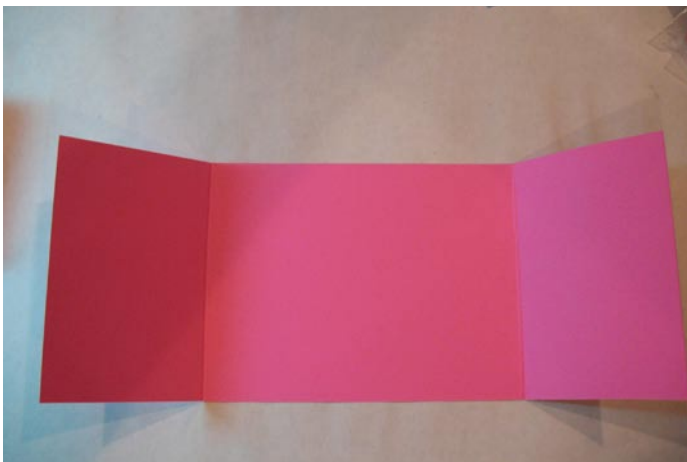
February/March 2008

*I love this card. From the gated opening to the tags inside, it has lots of room to share your message. Try putting pictures on each of the tags for a very special card.*



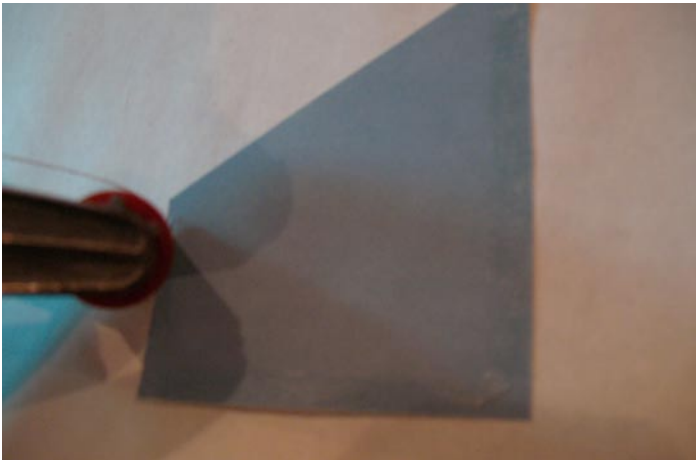
### Supplies:

- Cardstock for Base: 4-1/4" x 11"
- 2 Coordinating Pieces of Designer Paper: 3-1/2" x 2-5/8"
- 2 Coordinating Pieces of Designer Paper: 1-3/4" x 2-5/8"
- 4 Cardstock Pieces for Tags: 2-1/8" x 3-3/4"
- 2 Designer Paper Pieces for Card Front: 2-1/2" x 4"
- Neutral Cardstock Piece for Front Panel: 3-3/4" x 2-1/4"
- Coordinating Cardstock/Designer Paper for Front Panel Mat: 4" x 2-1/2"
- Bone Folder
- Stamps
- Ink
- Ribbon
- Embellishments of Choice
- Adhesive
- Tag Corner Punch or Scissors



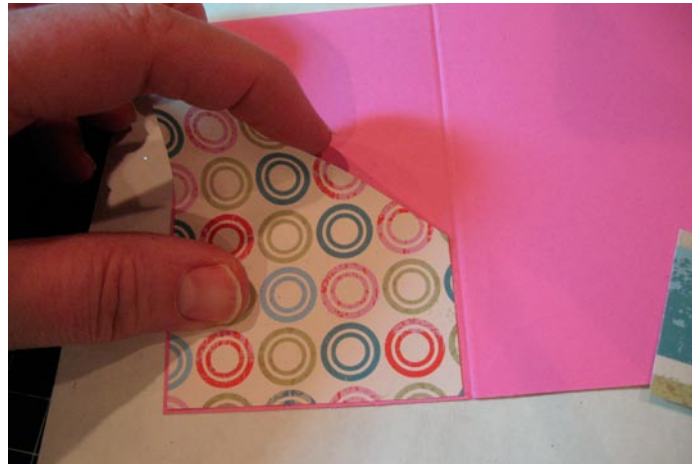
### Step One:

Use bone folder or scoring tool to score both ends of the cardstock 2-3/4" from the edge. Use the bone folder to flatten the fold firmly. This will help keep the card closed when the tags are inserted.



### Step Three:

Apply an adhesive strip around the two sides and the bottom of the back of each diagonal piece. Do not apply adhesive to the diagonal.



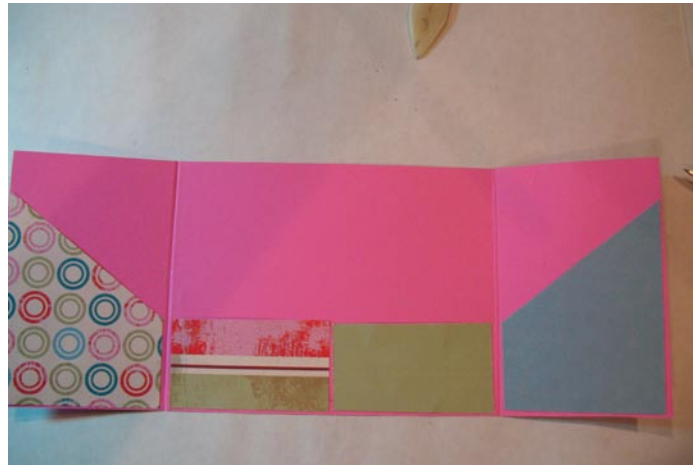
### Step Four:

Adhere one of the diagonal tag pockets to the left inside of the card base.



### Step Five:

Apply an adhesive strip around the two short sides and the bottom of the back of each small rectangular piece. Adhere one piece close to the fold (and bottom) of the card base.



### Step Six:

Repeat with the remaining two pieces.



### Step Seven:

Use the tag corner punch or scissors to trim two corners off the top of all four tags.

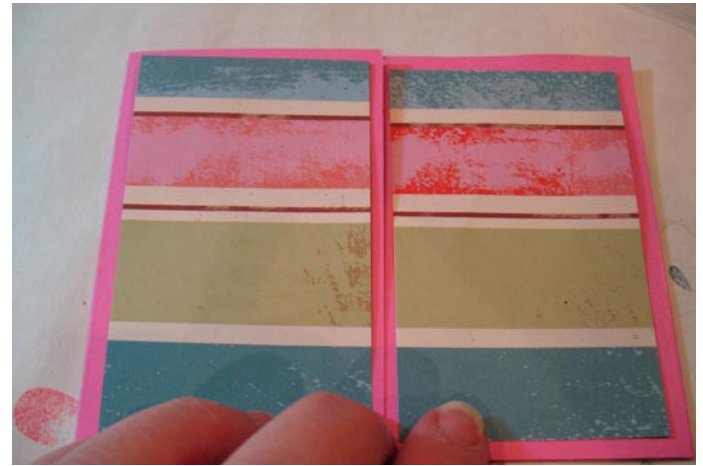


### Step Eight:

Decorate the tags with stamps and ink. Avoid lumpy embellishments or the card may not close properly.



**Step Eight:**  
Add ribbons to the top of each tag.



**Step Nine:**  
Adhere the card front designer paper to two front flaps.



**Step Ten:**  
Create and mat a front panel and decorate with stamps and embellishments as desired. Note: The two bottom layers of the panel shown above are made using the dimensions in the directions; two additional panels were added for decoration.



**Step Eleven:**  
Apply adhesive to the left side of the back of the front panel (only apply adhesive to 1/2 of the panel). Adhere the panel to the front of the card.



**Step Eleven Continued:**



**Step Ten:**  
Insert tags into the pockets.

## Finished Card

Finished Piece by: Pat Huntoon

Stamps: Close To My Heart

Close To My Heart designs are © CTMH Co.



## Finished Card

Artwork: Pat Huntoon

Stamps: Stampin' Up!

© 1990-2008 Stampin' Up! ®



## Finished Card

Artwork: Connie Babbert

Stamps: My Favorite Things



## Finished Card

Artwork: Jane Bosi

Stamps: Stampin; Up!, Heidi Swapp



## Finished Card

Artwork: Vada Schutz

Stamps: Art Impressions, The Stampsmith



# Finished Card

Artwork: Pat Huntoon  
Stamps: Stampin' Up!  
© 1990-2008 Stampin' Up! ®



# Finished Card

Artwork: Mary Ellen Harrison  
Stamps: D.O.T.S., Dawn Hauser



# Finished Card

Artwork: Mary Ellen Harrison

Stamps: Close To My Heart, PSX

