

Copic Smooshed Alcohol Tutorial

One of my favorite ways to use my craft sheet is as a palette. Filmed by Pat Huntoon.

Finished Card:

Artist: Pat Huntoon

Stamps: Technique Junkies Stamps



Supplies:

- 3 - 4 Copic or other Alcohol-based Markers
- Hand Sanitizer
- Glossy Cardstock
- Non-stick Craft Sheet



Step One:

Scribble one of the Copic Markers directly onto the craft sheet into a small square of color.



Step Two:

Scribble the second color onto the non-stick sheet next to the first, into a second square.



Step Three:

Add the third color below the other two. If using a fourth marker, add that color next to the others.



Step Four:

Place several drops of hand sanitizer over the marker color on the craft sheet.



Step Five:

Dip the paper face down into the color mixture. Move the paper gently back and forth to blend and apply the colors onto the paper.

© Patricia Huntoon



Step Six:

Lift the paper to check color placement. If more color is desired, move to Step Seven.



Step Seven:

If more color remains on the craft sheet, redip the paper into it. If the color on the sheet is depleted, reapply marker and hand sanitizer and redip the areas needed.



Step Nine:

To clean mat, apply more hand sanitizer to mat and wipe clean with a paper towel.



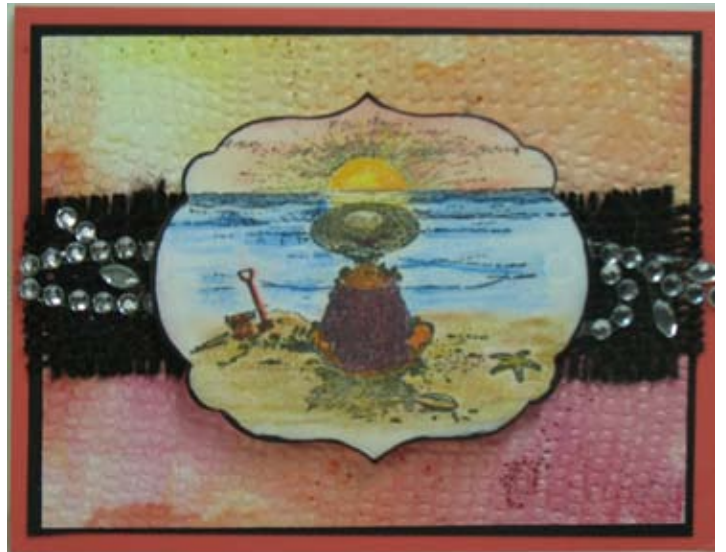
Step Eight:

When satisfied with the color placement, allow the piece to dry and use as desired.



Step Nine Continued

Finished Card:
Artist: Pat Huntoon
Stamps: Technique Junkies Stamps



Finished Card:

Artist: Pat Huntoon

Stamps: Technique Junkies Stamps



Finished Card:

Artist: Shelly Schmidt

Stamps: I Brake for Stamps; Create with TLC



Finished Card:

Artist: Beth Norman

Stamps: Technique Junkies Stamps



Finished Card:

Artist: Tricia O'Bin

Stamps: Technique Junkies Stamps

